



Please be advised there will be a road closure on Stirling Road near 13125 Stirling Road .

This closure is necessary to ensure the safety of all residents traversing Stirling Road. The construction will require a large crane to set heavy concrete structures.

A detour will be available for through traffic with local residents having access to their homes at all times.

Please see provided Maintenance of Traffic Map for reference.

**Friday,
April 4, 2025, 9:00am - 4:00pm**

Please contact us in you have any questions, 954-434-0008.



PLAN NOT TO SCALE

DETOUR OVERVIEW

TABLE 1 CHANNELIZING DEVICE SPACING				
Work Zone Speed (mph)	Max. Spacing (feet)			
	Cones or Temporary Tubular Markers		Type I Barricades, Type II Barricades, Vertical Panels, or Drums	
	Taper	Tangent	Taper	Tangent
≤ 45	25	50	25	50
≥ 50	25	50	50	100

TABLE 2 TAPER LENGTH "L"	
Work Zone Speed (mph)	Min. Length (feet)
≤ 40	$L = WS^2$
≥ 45	$L = WS$

Where: W = width of offset in feet
S = speed in mph

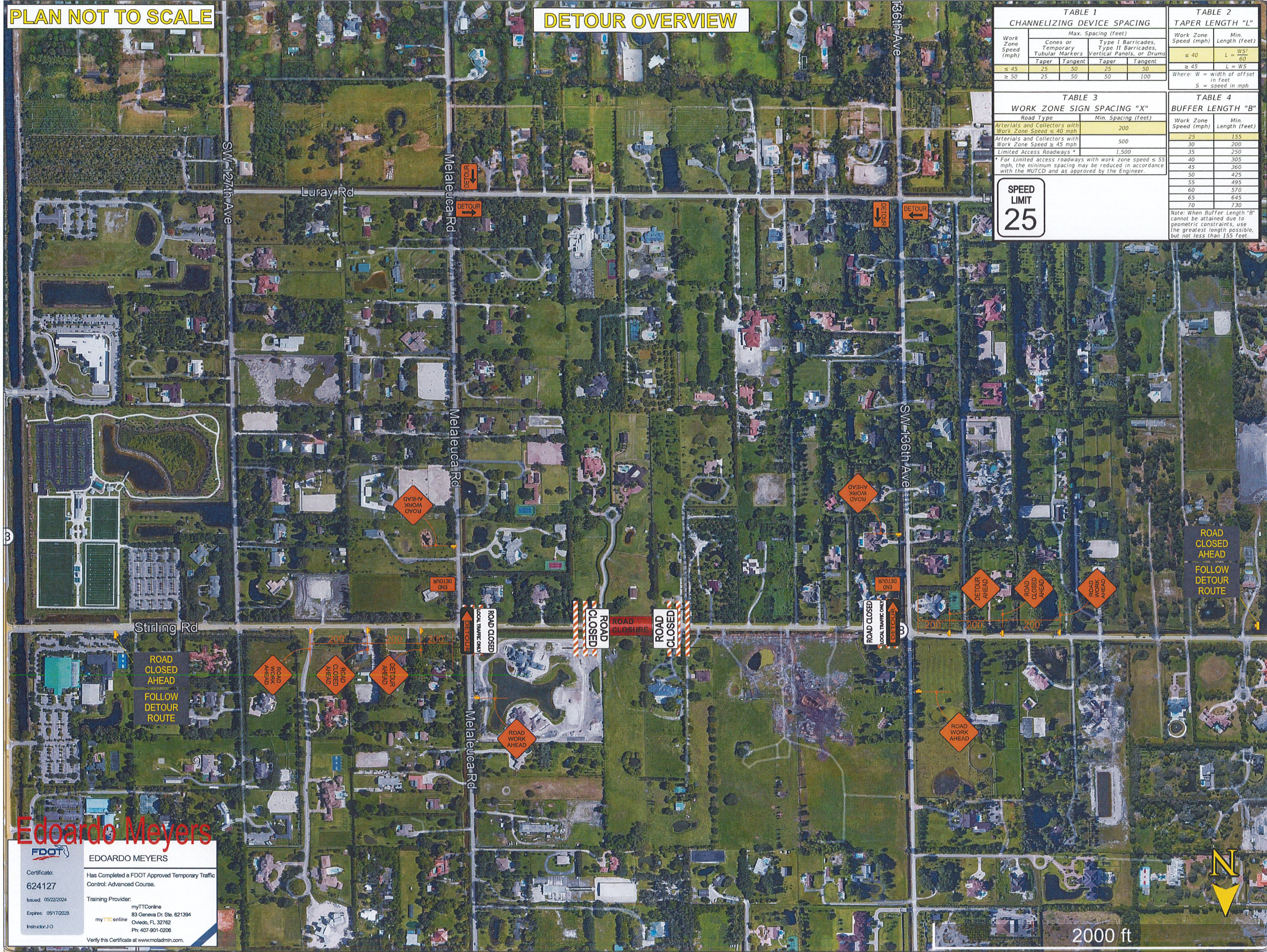
TABLE 3 WORK ZONE SIGN SPACING "X"	
Road Type	Min. Spacing (feet)
Arterials and Collectors with Work Zone Speed ≤ 40 mph	200
Arterials and Collectors with Work Zone Speed ≥ 45 mph	500
Limited Access Roadways *	1,500

* For limited access roadways with work zone speed ≤ 55 mph, the minimum spacing may be reduced in accordance with the MUTCD and as approved by the Engineer.

TABLE 4 BUFFER LENGTH "B"	
Work Zone Speed (mph)	Min. Length (feet)
25	155
30	200
35	250
40	305
45	360
50	425
55	495
60	570
65	645
70	730

Note: When Buffer Length "B" cannot be attained due to geometric constraints, use the greatest length possible, but not less than 155 feet.

SPEED LIMIT 25



Edoardo Meyers

FDOT EDOARDO MEYERS

Certificate: 624127
 Issued: 05/22/2024
 Expires: 05/17/2028
 Instructor: J.O.

Has Completed a FDOT Approved Temporary Traffic Control, Advanced Course.

Training Provider: myTTOnline
 83 Geneva Dr. Ste. 621394
 Oviedo, FL 32762
 Ph: 407-901-0206

Verify this Certificate at www.motadmin.com.

DRAWN BY EM

MOT Plans, Inc (954)560-0450

PROJECT:

SITE: 13125 STIRLING RD SOUTHWEST RANCHES

PLAN NOT TO SCALE

CLOSURE OVERVIEW

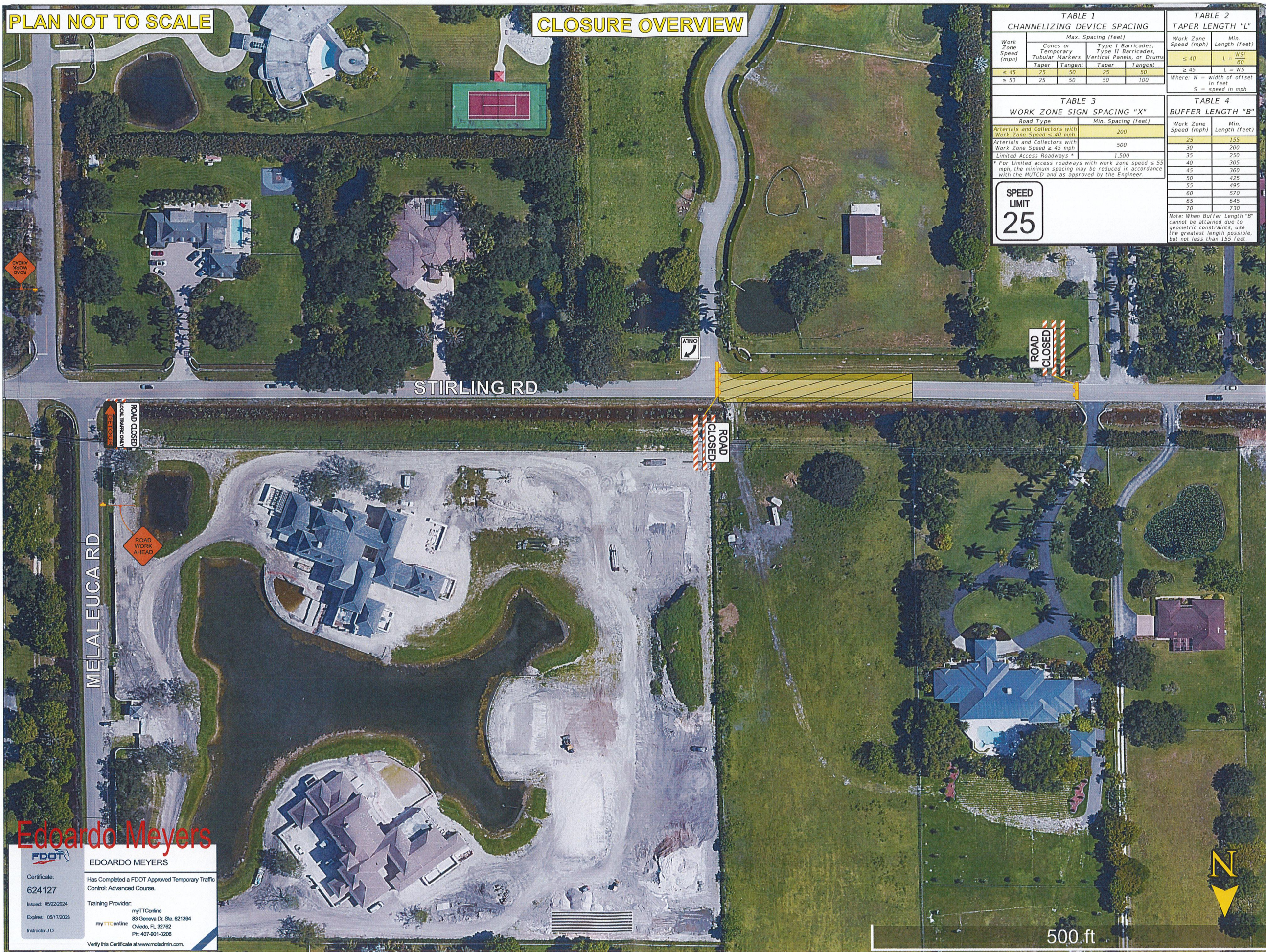


TABLE 1
CHANNELIZING DEVICE SPACING

Work Zone Speed (mph)	Max. Spacing (feet)			
	Cones or Temporary Tubular Markers		Type I Barricades, Type II Barricades, Vertical Panels, or Drums	
	Taper	Tangent	Taper	Tangent
≤ 45	25	50	25	50
≥ 50	25	50	50	100

TABLE 2
TAPER LENGTH "L"

Work Zone Speed (mph)	Min. Length (feet)
≤ 40	$L = WS^2$
≥ 45	$L = WS$

Where: W = width of offset in feet
S = speed in mph

TABLE 3
WORK ZONE SIGN SPACING "X"

Road Type	Min. Spacing (feet)
Arterials and Collectors with Work Zone Speed ≤ 40 mph	200
Arterials and Collectors with Work Zone Speed ≥ 45 mph	500
Limited Access Roadways *	1,500

* For limited access roadways with work zone speed ≤ 55 mph, the minimum spacing may be reduced in accordance with the MUTCD and as approved by the Engineer.

TABLE 4
BUFFER LENGTH "B"

Work Zone Speed (mph)	Min. Length (feet)
25	155
30	200
35	250
40	305
45	360
50	425
55	495
60	570
65	645
70	730

SPEED LIMIT
25

Note: When Buffer Length "B" cannot be attained due to geometric constraints, use the greatest length possible, but not less than 155 feet.

Edoardo Meyers

FDOT
EDOARDO MEYERS

Certificate: 624127
Issued: 05/22/2024
Expires: 05/17/2025
Instructor: J.O.

Has Completed a FDOT Approved Temporary Traffic Control: Advanced Course.

Training Provider: myTTOnline
83 Geneva Dr. Ste. 621394
Oviedo, FL 32762
Ph: 407-901-0206

Verify this Certificate at www.motadmin.com.

DRAWN BY EM

MOT Plans, Inc (954)560-0450

PROJECT:

SITE: 13125 STIRLING RD SOUTHWEST RANCHES